

# Why your home is a **FLEA MAGNET**

When it comes to fleas, your pet is most likely to become a target if it comes into contact with an infested area or environment. Read on for reasons your home makes an ideal environment for fleas to flourish—and what you can do about it.

## Outside the home

For successful reproduction, fleas select protected, shady, undisturbed areas, for example:

- ✦ Porches
- ✦ Decks
- ✦ Stairs
- ✦ And around doghouses

## Inside the home

Inside the home, fleas thrive.

They will go from egg to adult:

- ✦ In pet beds
- ✦ Under furniture
- ✦ Buried deep in carpets

**PLUS**, they can survive a wide range of temperatures, so even winter is no guarantee you have seen the last of fleas. Without the ideal temperature, early flea stages lay dormant, delaying the emergence of adult fleas—anywhere from two weeks to just under six months. Fleas will do just fine in microenvironments around the home, where temperature and humidity are elevated.

## What you can do:

Your veterinary team can offer advice on how you can eliminate microenvironments. Here's how you might start:



Eliminate weeds and brush piles



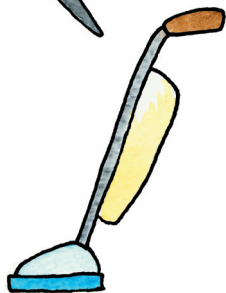
Keep rodents away from your home



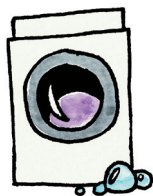
Treat your yard with outdoor products



Routinely cut your grass



Vacuum regularly (under furniture, too)



Wash bedding—yours and Fido's—routinely



Keep baseboards and other hidden areas clean

By learning more and listening to your veterinary team, you and your pet will be able to enjoy quality time together—**flea-free.**

SOURCE: Julie Legred, CVT, board member of the Companion Animal Parasite Council